

exile audio

1

Javelin

4 pr

Cabin Speakers

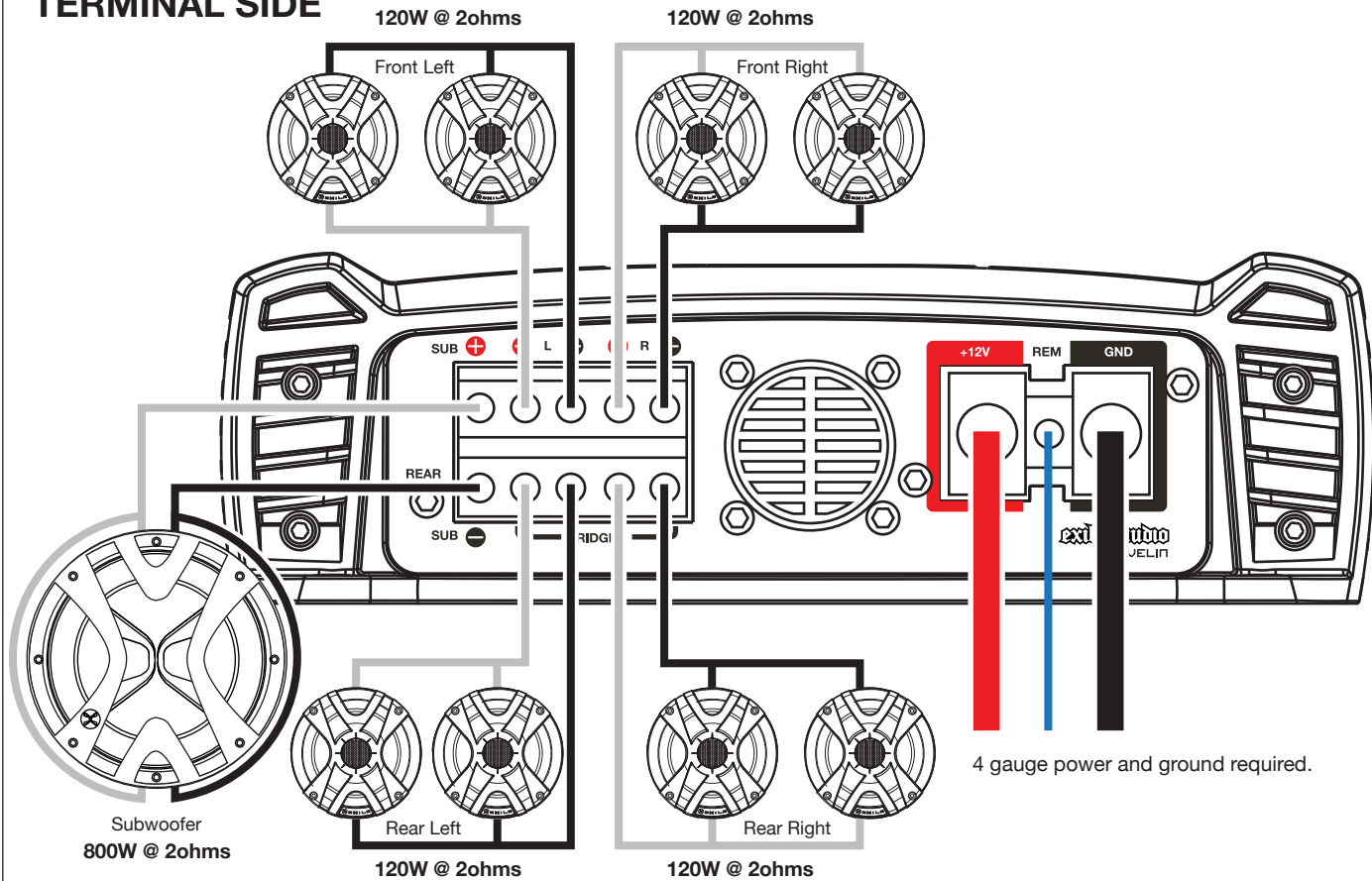
1

DVC Subwoofer



SERIES
WIRING CHART

TERMINAL SIDE



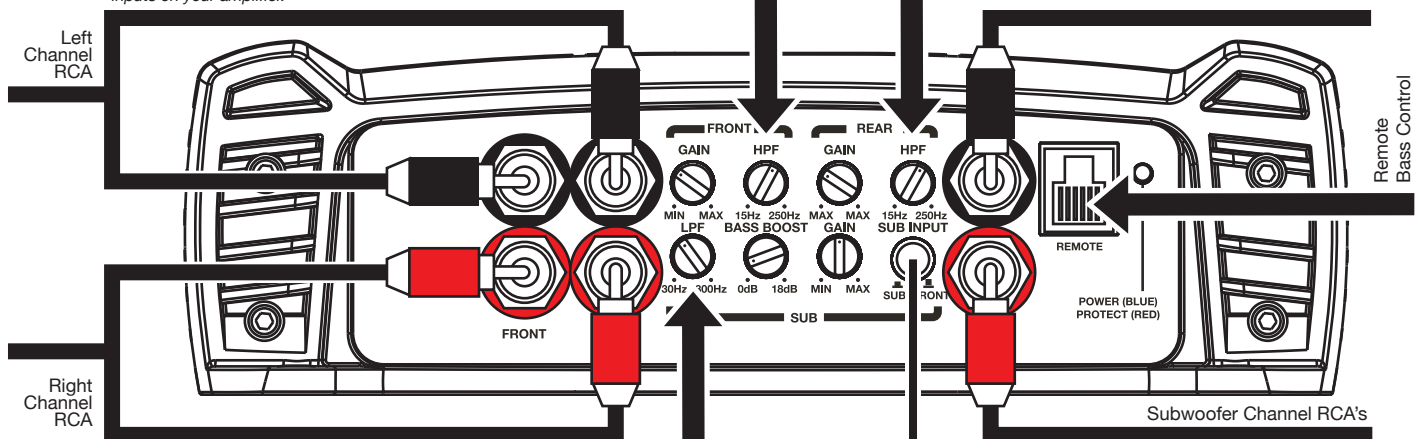
SIGNAL SIDE

Note: Use a Y adapter to split the left channel output from your source unit to supply both the front left and rear left inputs on your amplifier.



HPF Settings: For XM7 / SXT65 / SX65M:

Starting at 15Hz (fully turned counterclockwise), turn the knob to **1 o'clock**



Note: Use a Y adapter to split the right channel output from your source unit to supply both the front right and rear right inputs on your amplifier.



LPF Settings: For Subwoofer

Starting at 30Hz (fully turned counterclockwise), turn the knob to **11 o'clock**

Note: If the source unit is not a ZLD you can share the sub input with the front channel input by pressing this button to "front". This eliminates the need to run a third par of RCA cables to your amplifier, for the sub input.

exile audio

1

Javelin

+ 3

pr

Cabin Speakers

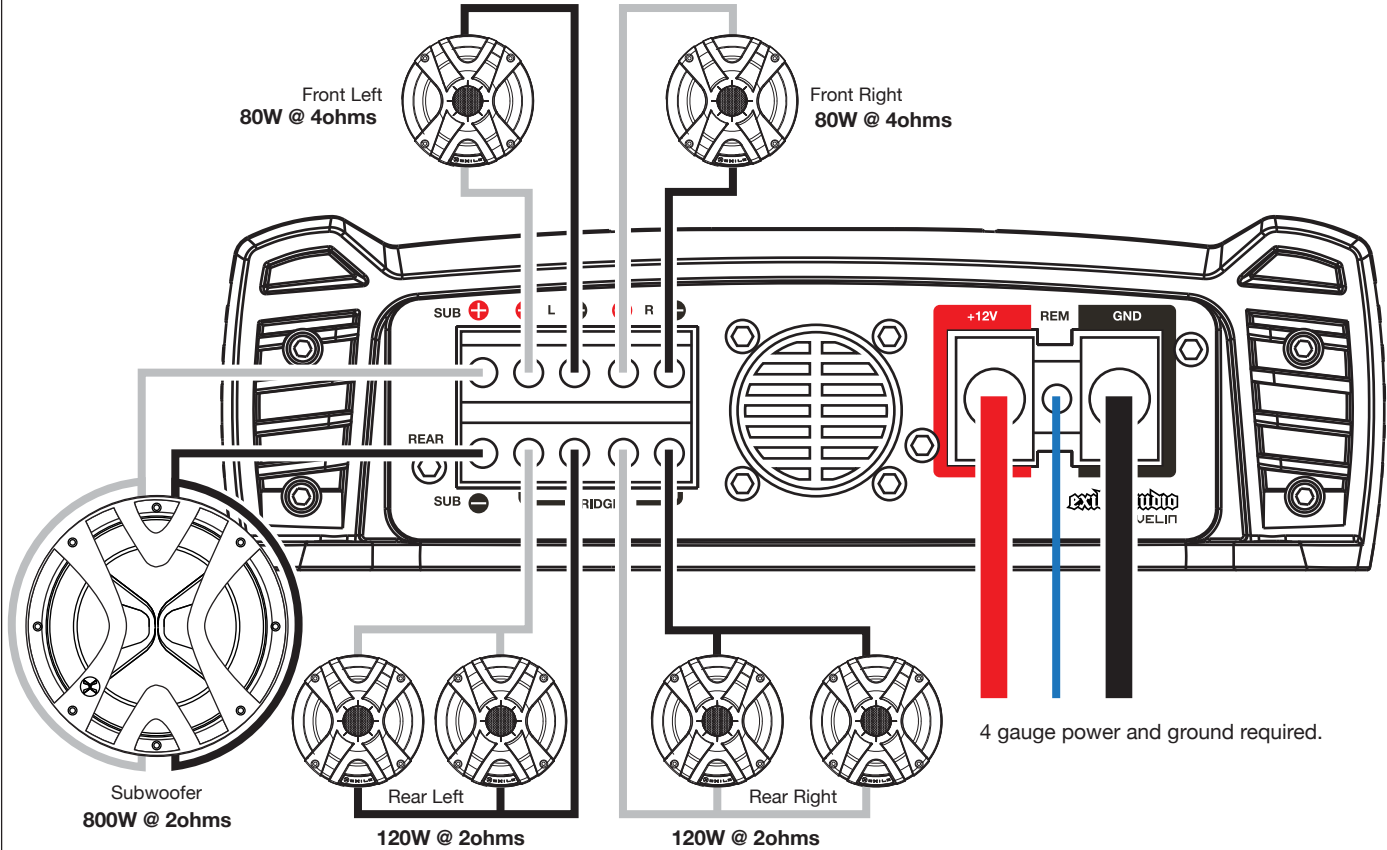
+ 1

DVC Subwoofer



SERIES
WIRING CHART

TERMINAL SIDE



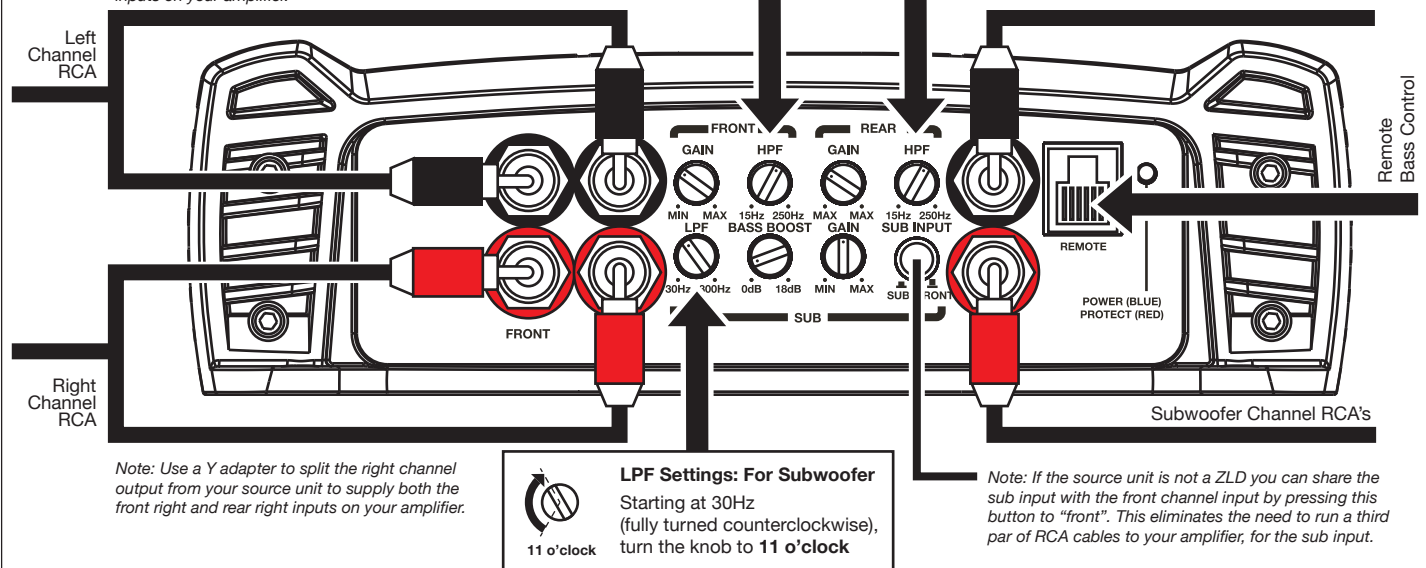
SIGNAL SIDE

Note: Use a Y adapter to split the left channel output from your source unit to supply both the front left and rear left inputs on your amplifier.

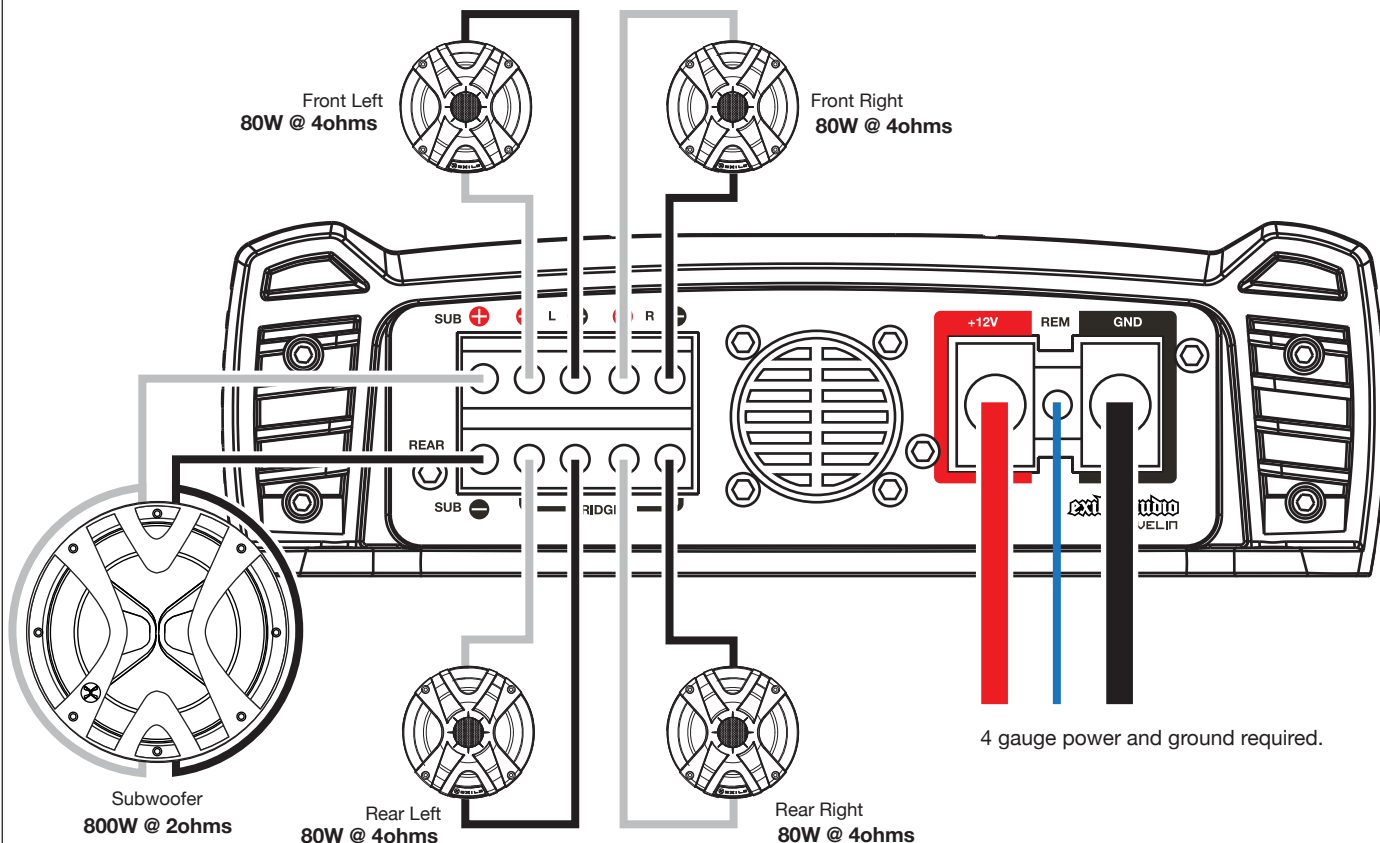


HPF Settings: For XM7 / SXT65 / SX65M:

Starting at 15Hz (fully turned counterclockwise), turn the knob to **1 o'clock**



TERMINAL SIDE



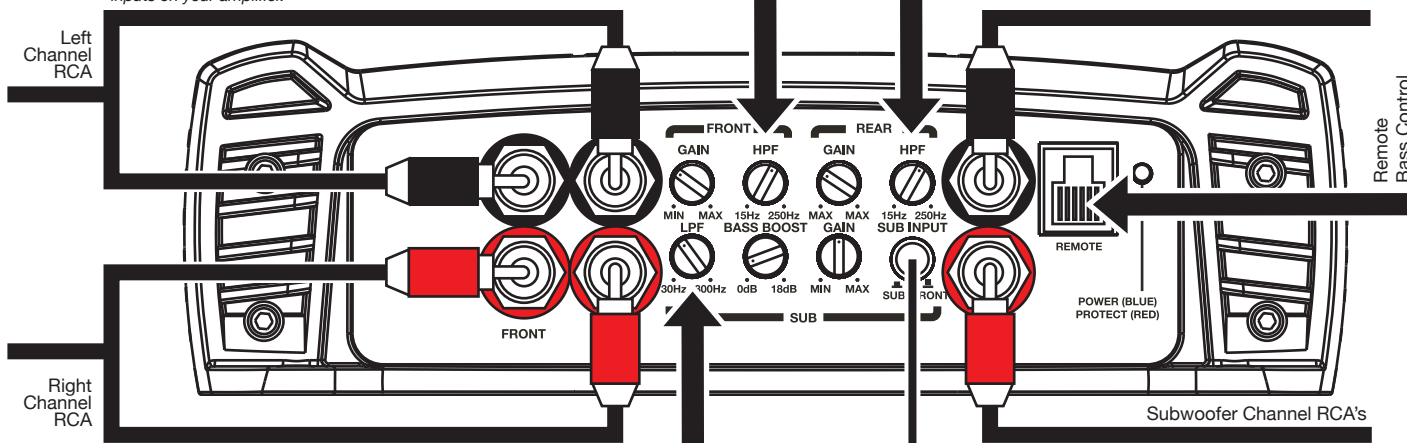
SIGNAL SIDE

Note: Use a Y adapter to split the left channel output from your source unit to supply both the front left and rear left inputs on your amplifier.



HPF Settings: For XM7 / SXT65 / SX65M:

Starting at 15Hz (fully turned counterclockwise), turn the knob to 1 o'clock



Note: Use a Y adapter to split the right channel output from your source unit to supply both the front right and rear right inputs on your amplifier.



LPF Settings: For Subwoofer

Starting at 30Hz (fully turned counterclockwise), turn the knob to 11 o'clock

Note: If the source unit is not a ZLD you can share the sub input with the front channel input by pressing this button to "front". This eliminates the need to run a third par of RCA cables to your amplifier, for the sub input.

exile audio

1

Javelin

1 + **1** pr

Tower Speakers

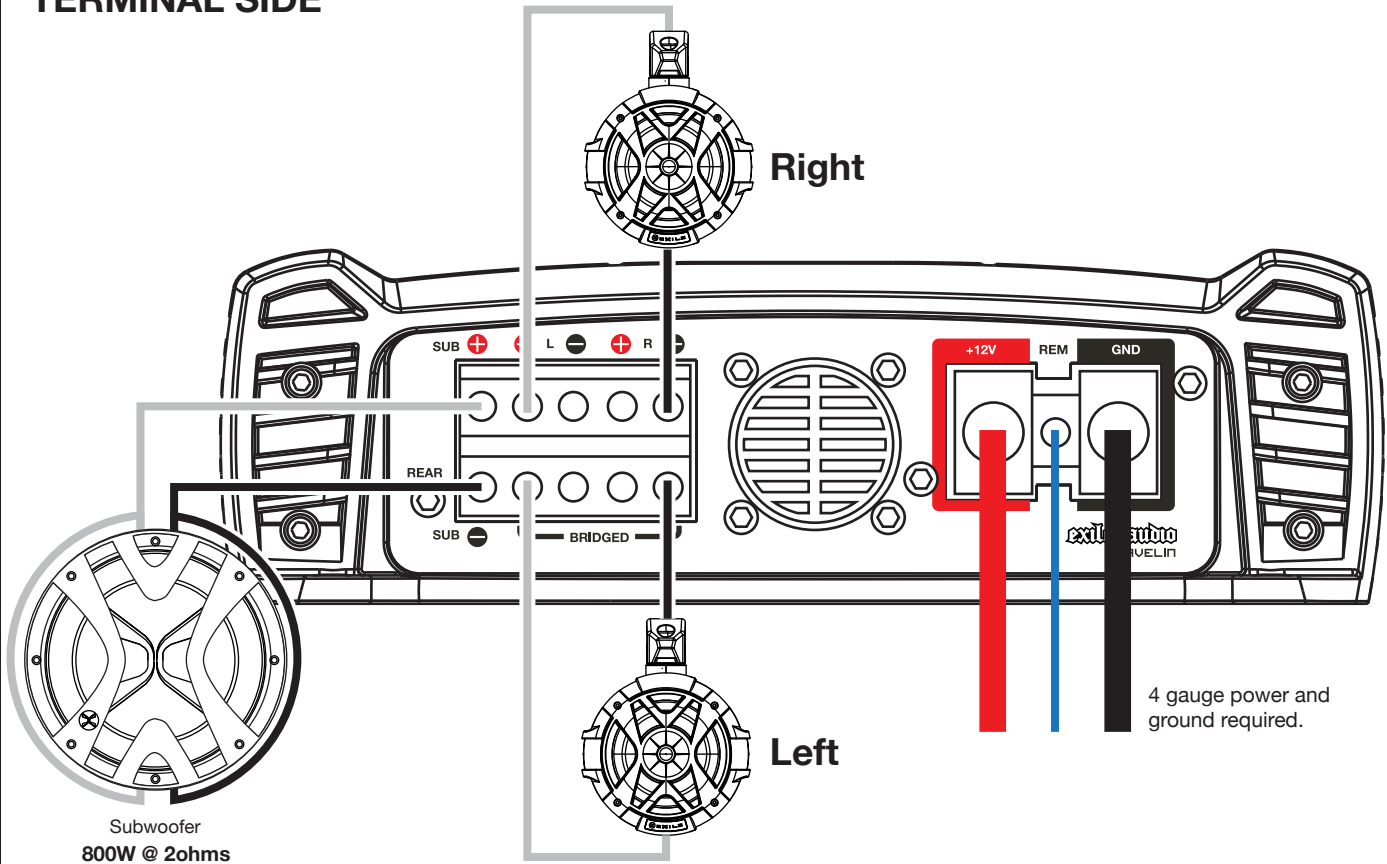
1

Xi12D Subwoofer



SERIES
WIRING CHART

TERMINAL SIDE



SIGNAL SIDE



1 o'clock

HPF Settings: For XM7 / SXT65 / SX65M:

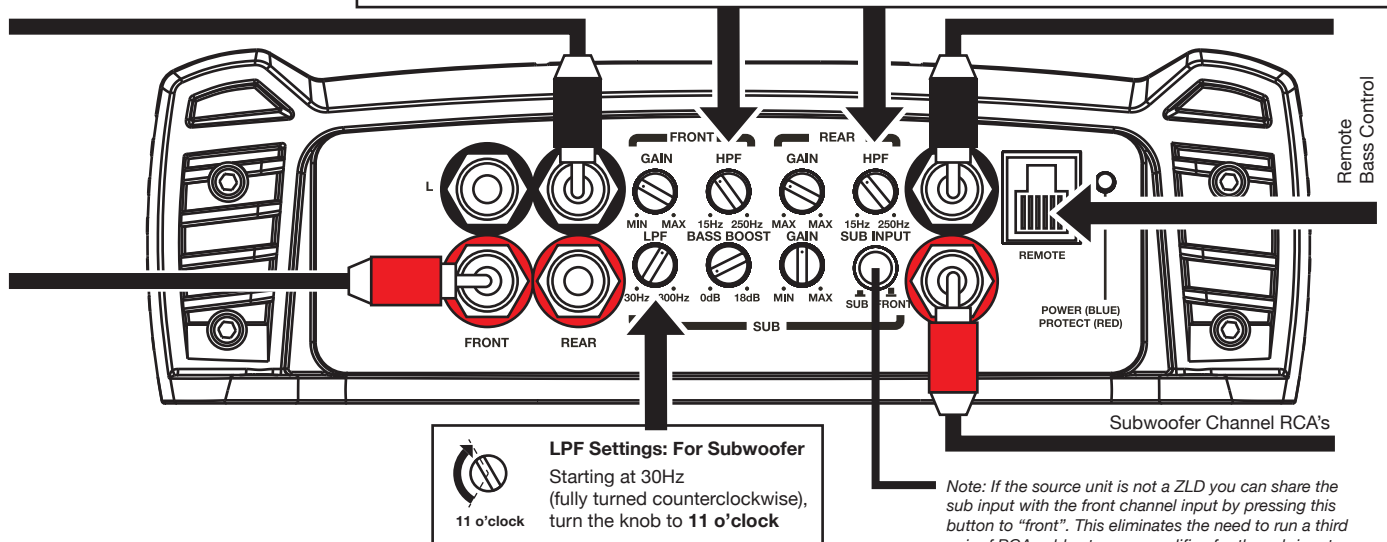
Starting at 15Hz (fully turned counterclockwise), turn the knob to **1 o'clock**



10 o'clock

HPF Settings: For XM9 / SXT9Q

Starting at 15Hz (fully turned counterclockwise), turn the knob to **10 o'clock**



1

Javelin

+

1

pr
Tower Speakers

+

2

pr
Cabin Speakers

+

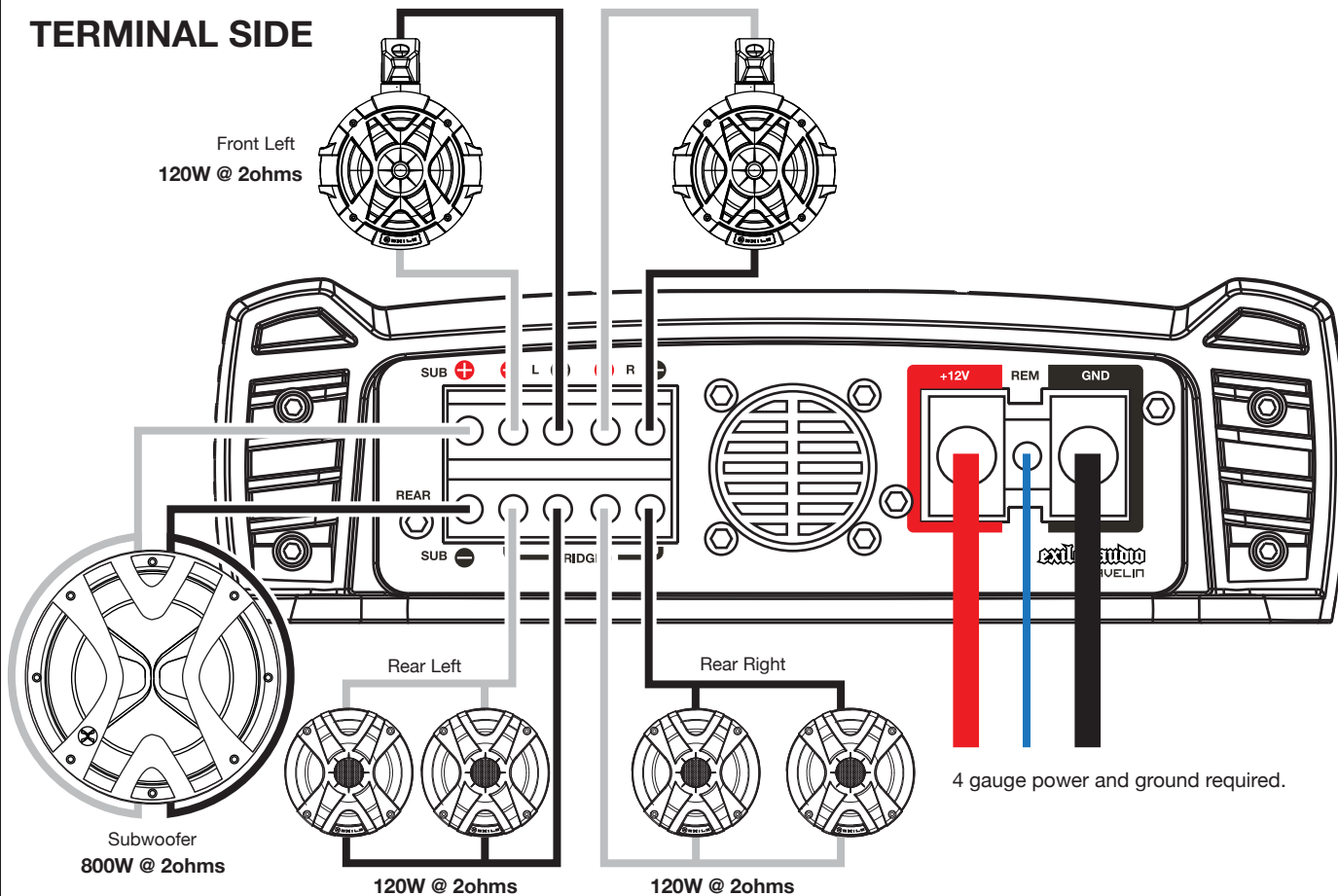
1

Xi12D Subwoofer



SERIES
WIRING CHART

TERMINAL SIDE



SIGNAL SIDE

Note: Use a Y adapter to split the left channel output from your source unit to supply both the front left and rear left inputs on your amplifier.



11 o'clock

HPF Settings: For XM7 / SXT65 / SX65M:

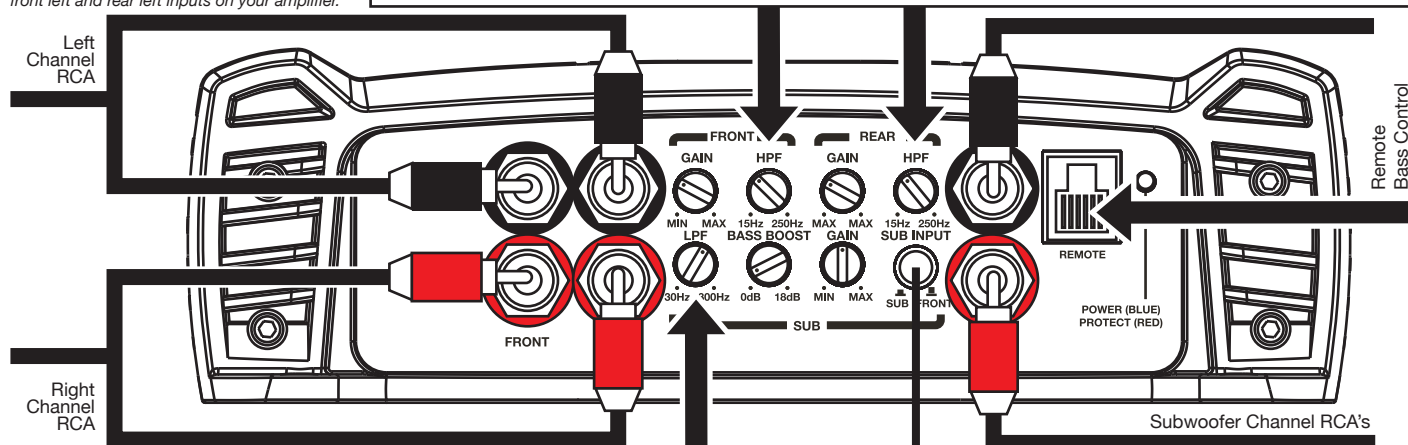
Starting at 15Hz (fully turned counterclockwise), turn the knob to 1 o'clock



10 o'clock

HPF Settings: For XM9 / SXT9Q

Starting at 15Hz (fully turned counterclockwise), turn the knob to 10 o'clock



Note: Use a Y adapter to split the right channel output from your source unit to supply both the front right and rear right inputs on your amplifier.



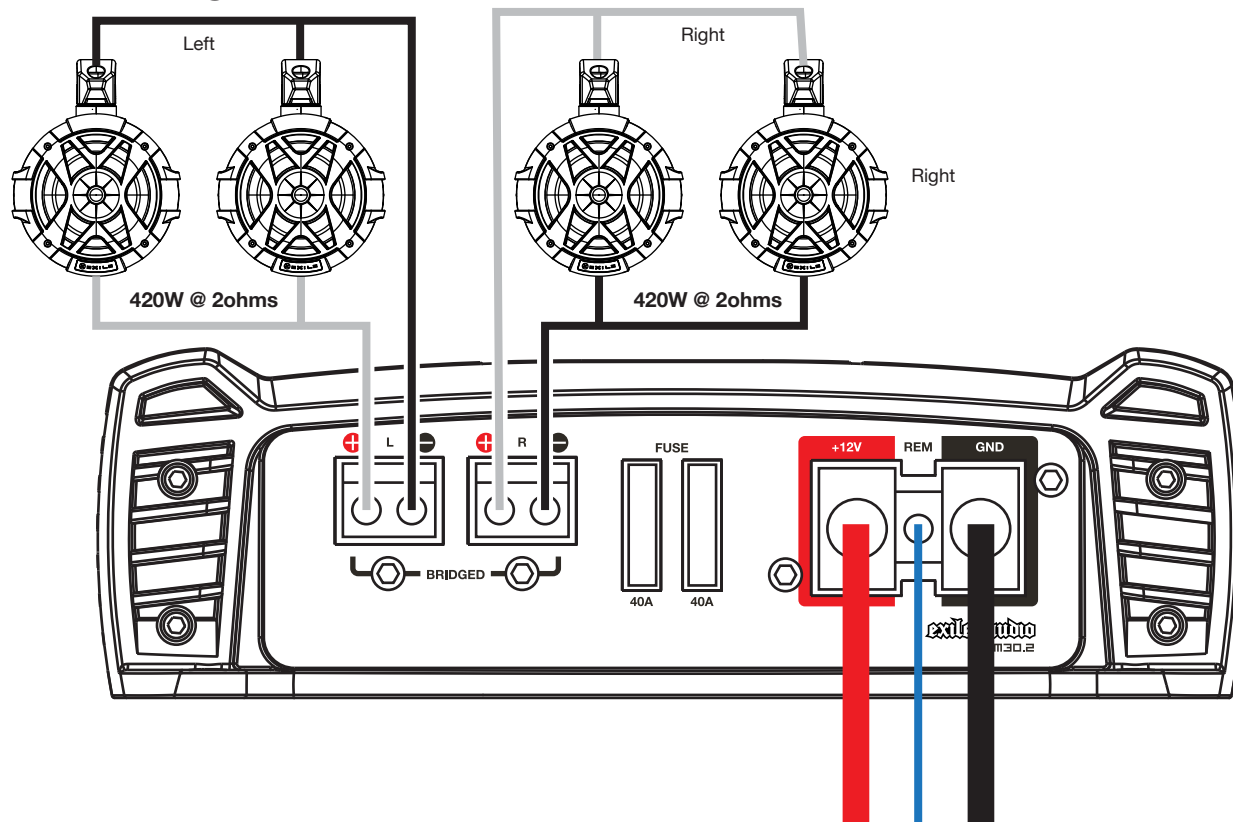
1 o'clock

LPF Settings: For Subwoofer

Starting at 30Hz (fully turned counterclockwise), turn the knob to 1 o'clock

Note: If the source unit is not a ZLD you can share the sub input with the front channel input by pressing this button to "front". This eliminates the need to run a third pair of RCA cables to your amplifier, for the sub input.

TERMINAL SIDE



4 gauge power and ground required.

SIGNAL SIDE



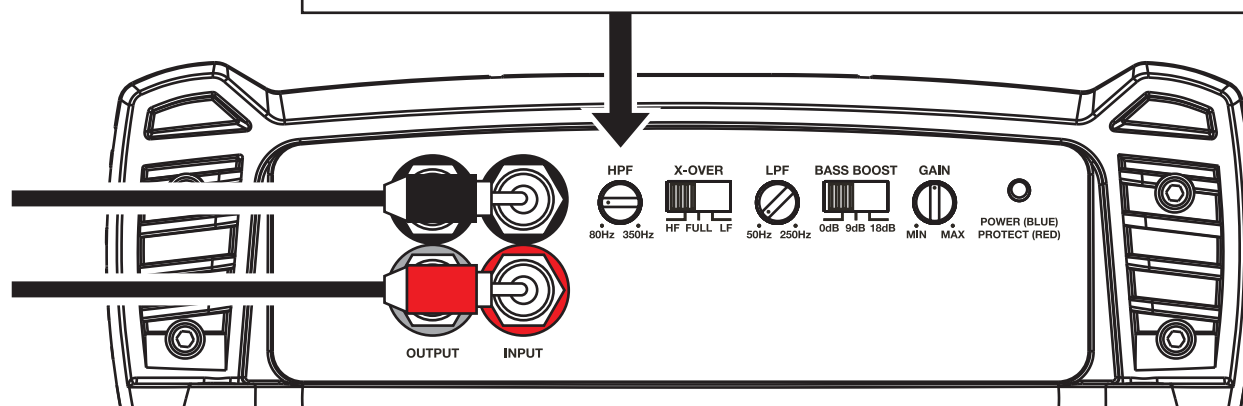
HPF Settings: For XM7 / SXT65 / SX65M:

Starting at 80Hz (fully turned counterclockwise), turn the knob to **110Hz**.

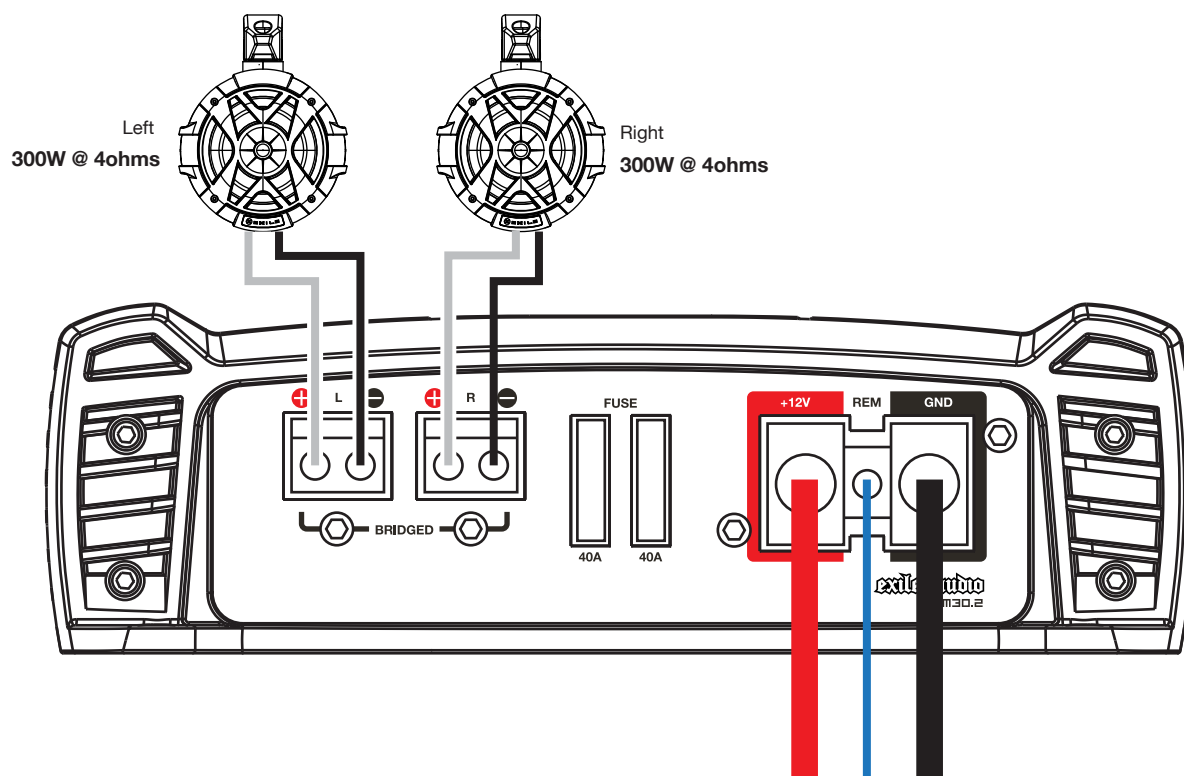


HPF Settings: For XM9 / SXT9Q

Turn all the way counterclockwise to **80Hz**



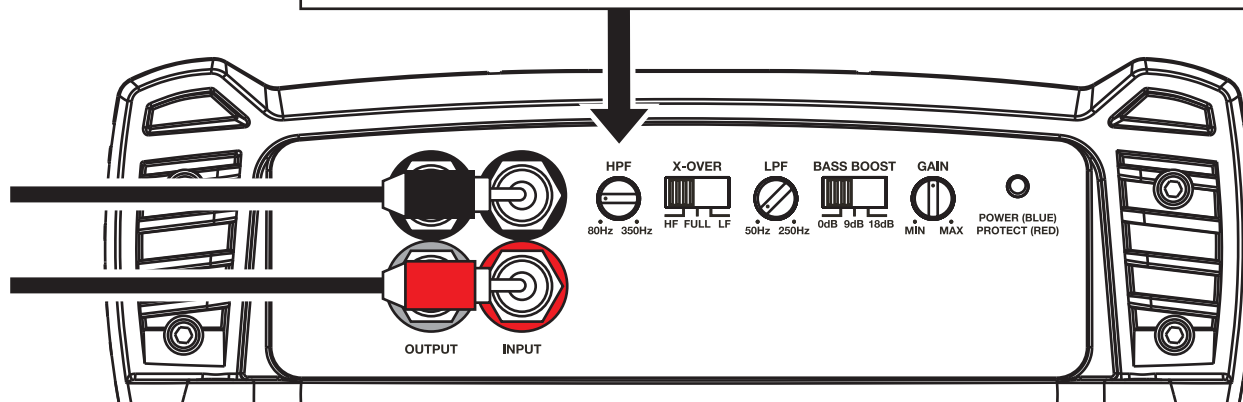
TERMINAL SIDE



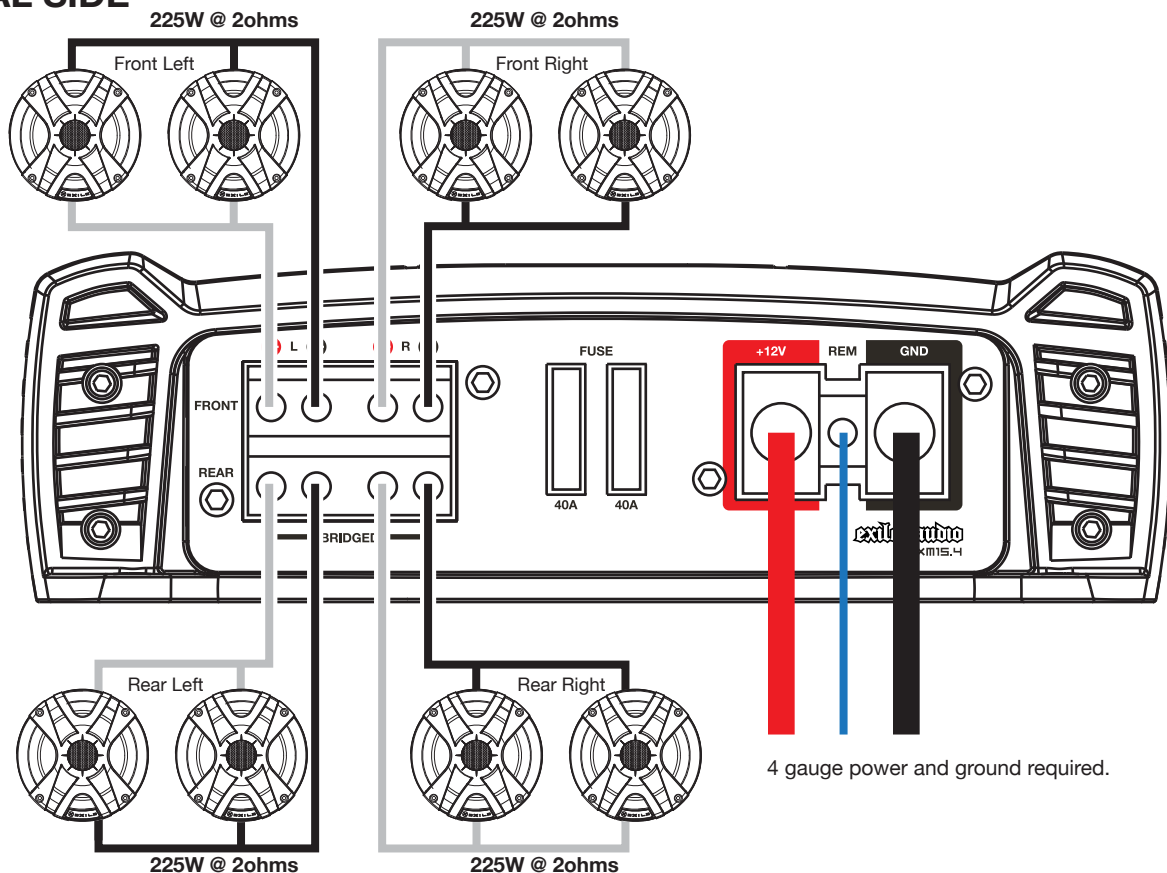
SIGNAL SIDE

HPF Settings: For XM7 / SXT65 / SX65M:
Starting at 80Hz (fully turned counterclockwise), turn the knob to **110Hz**.

HPF Settings: For XM9 / SXT9Q
Turn all the way counterclockwise to **80Hz**

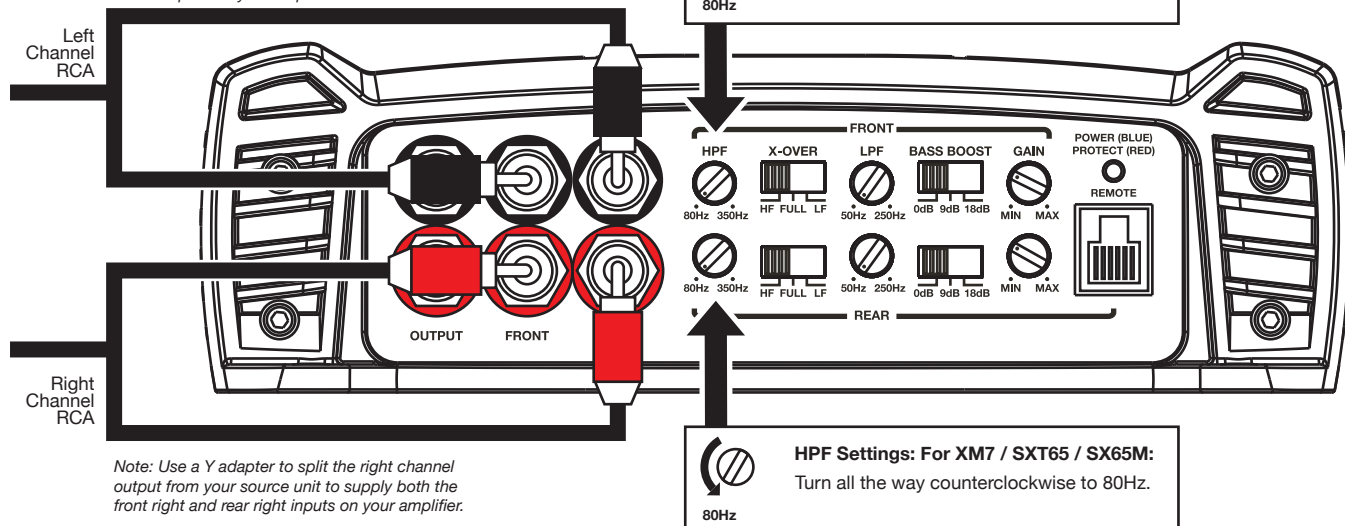


TERMINAL SIDE

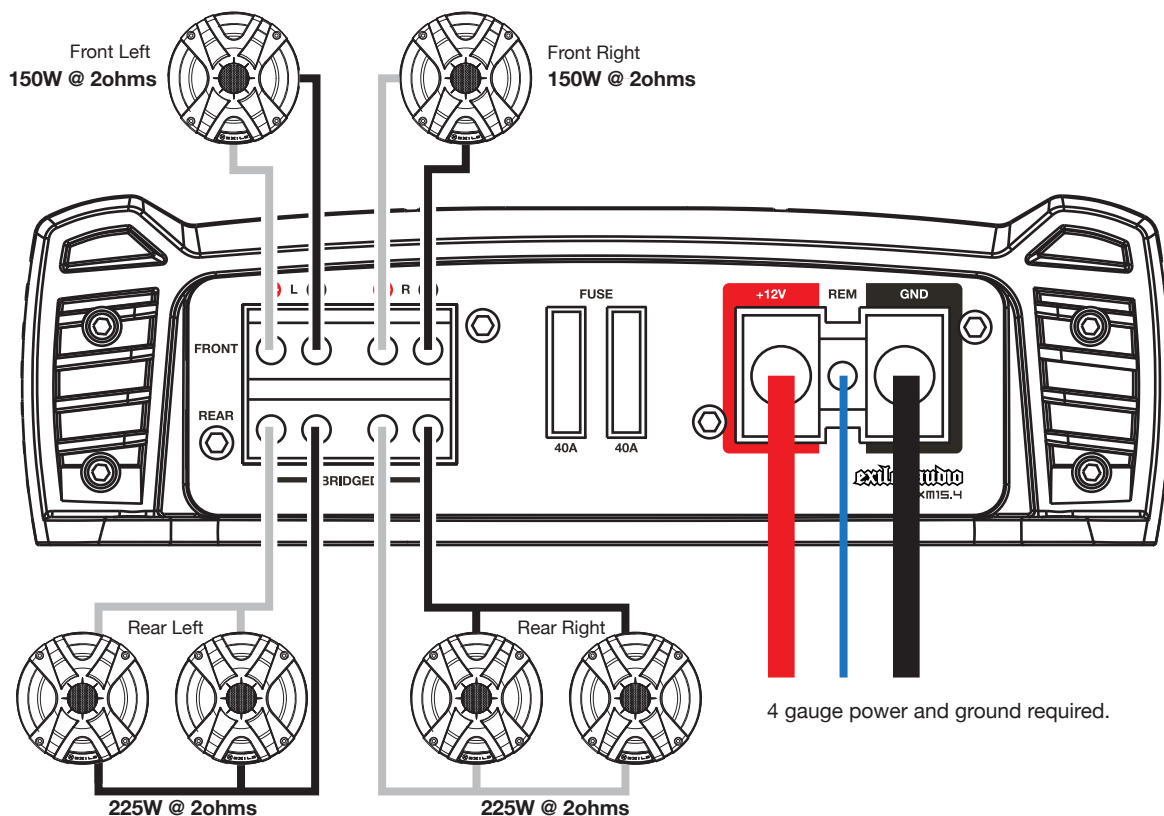


SIGNAL SIDE

Note: Use a Y adapter to split the left channel output from your source unit to supply both the front left and rear left inputs on your amplifier.

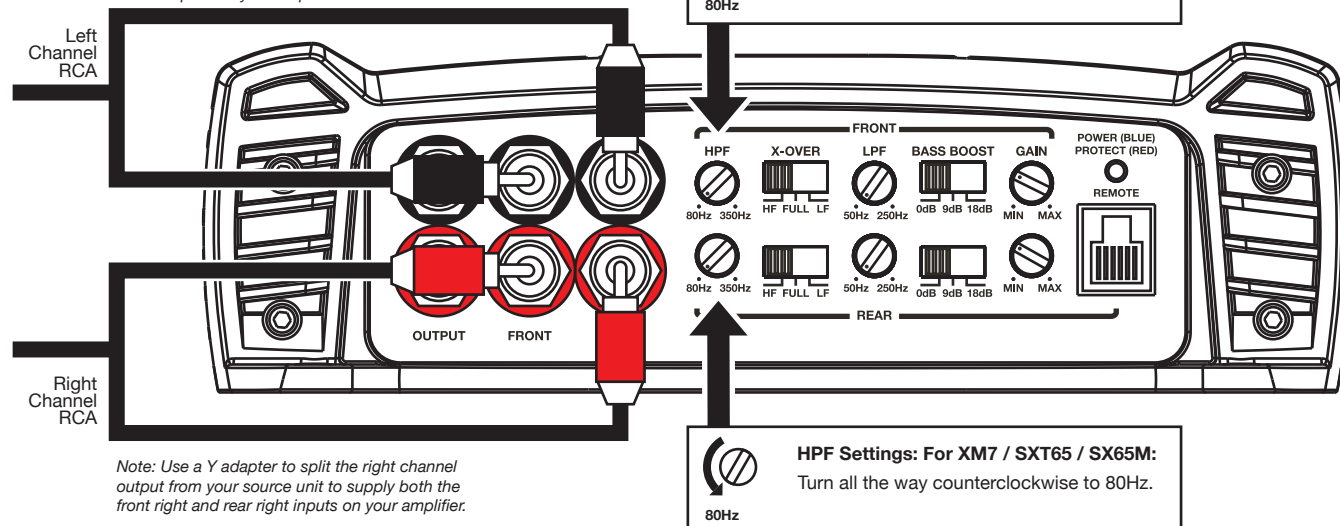


TERMINAL SIDE

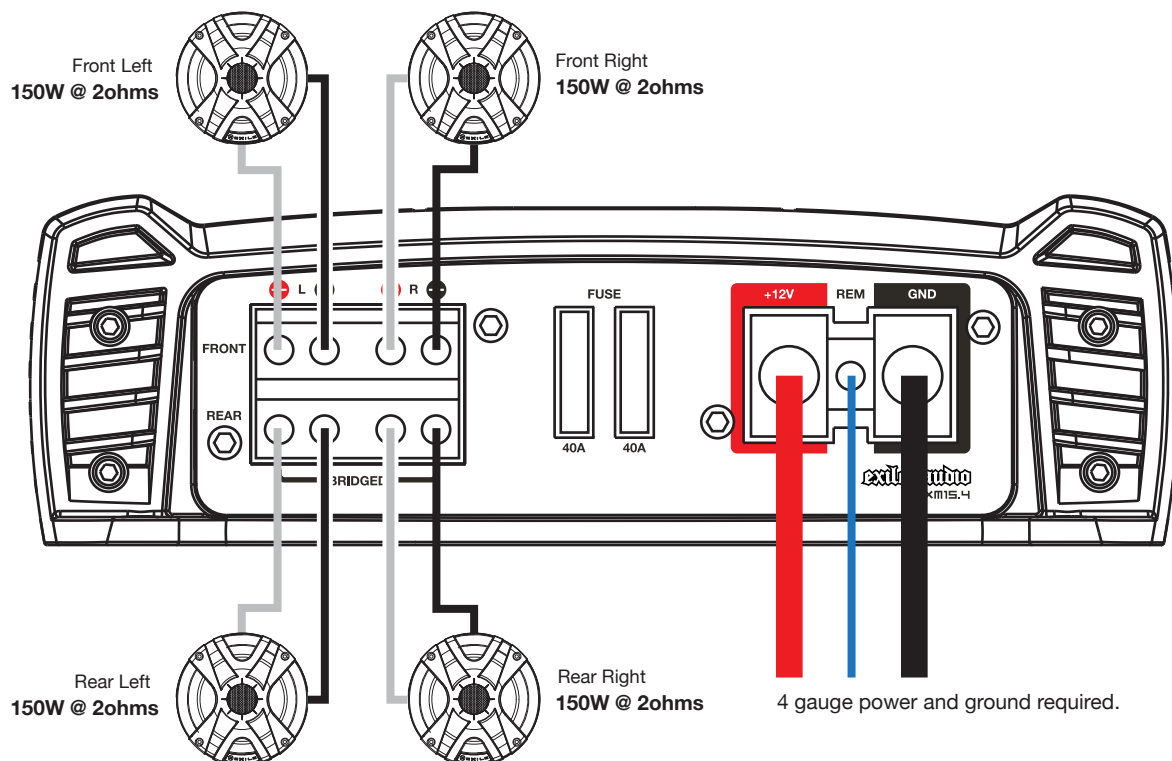


SIGNAL SIDE

Note: Use a Y adapter to split the left channel output from your source unit to supply both the front left and rear left inputs on your amplifier.

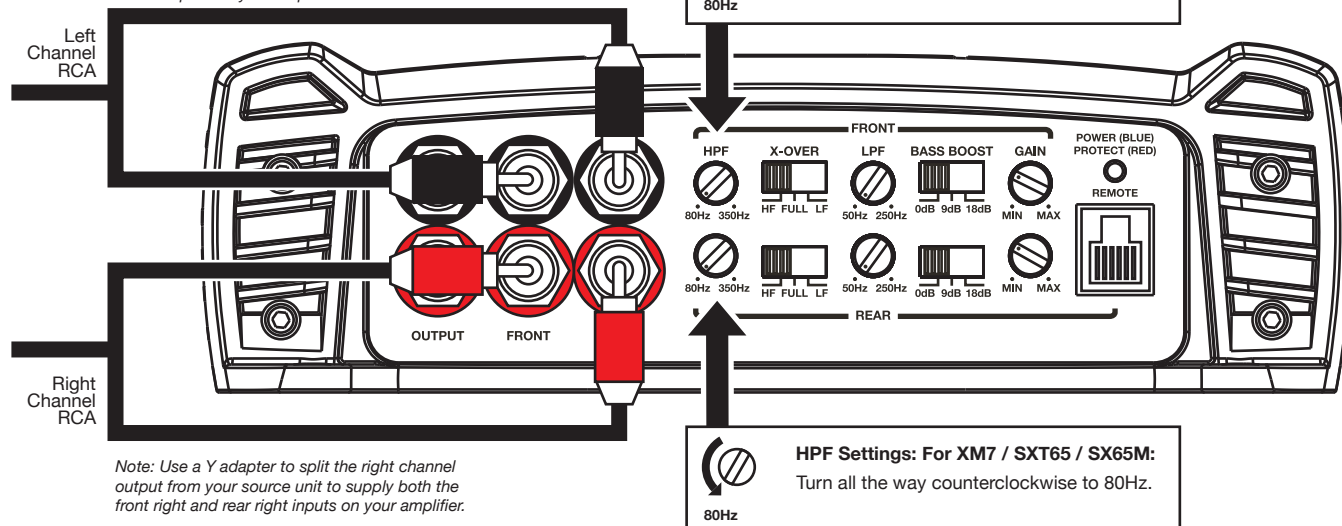


TERMINAL SIDE



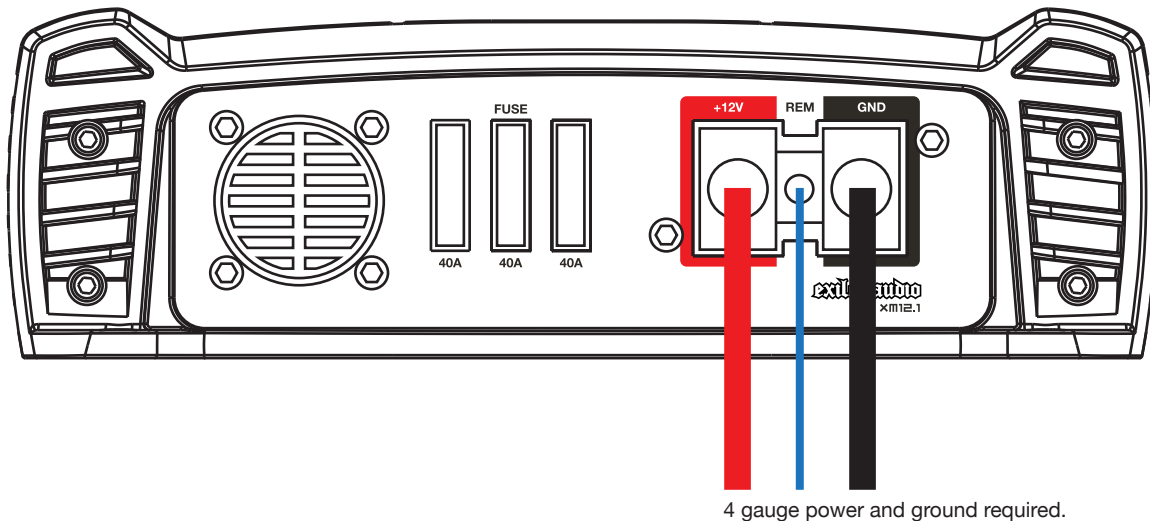
SIGNAL SIDE

Note: Use a Y adapter to split the left channel output from your source unit to supply both the front left and rear left inputs on your amplifier.

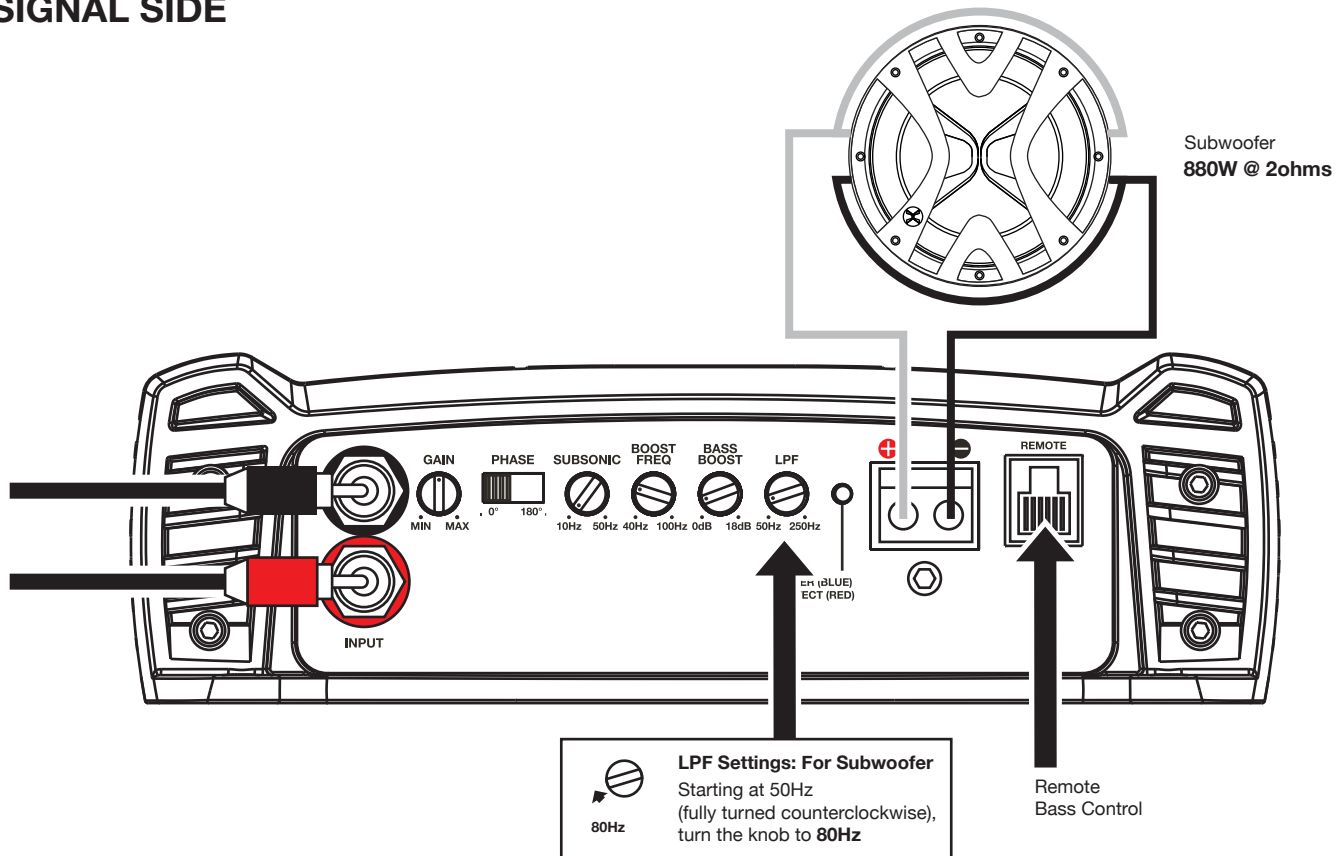


Note: Use a Y adapter to split the right channel output from your source unit to supply both the front right and rear right inputs on your amplifier.

TERMINAL SIDE



SIGNAL SIDE



exile audio

Hookup Kit

Powerflow Chart

Performance wire your audio system with quality cables and powerflow distribution. Wire it right the first time!



SERIES
WIRING CHART

